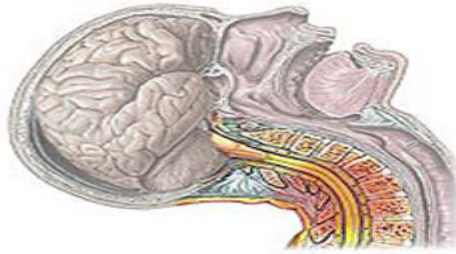


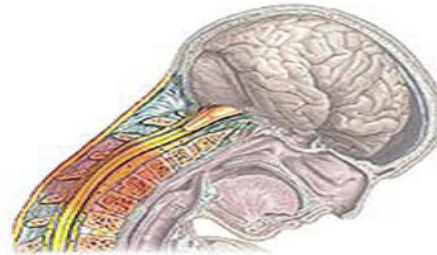
Whiplash Massage

Hyperextension



Sprain or strain of cervical tissues

Hyperflexion



Sunday, March 21, 2010

9 a.m. to 5:30 p.m. (7.5 CE) \$150

Learn the anatomy, physiology and kinesiology of the head and neck, spine and pelvis; pathology of whiplash and what happens to the soft tissues, joints and bones—even in low-impact collisions, as well as contraindications and precautions to treatment.

Experience effective treatment options, applications, modalities and manual therapies to relieve painful to debilitating symptoms of whiplash, from aromatherapy, hydrotherapy, infrared therapy, gentle energy to deep tissue techniques, neuromuscular reeducation, Chinese acupressure and TuiNa, to patient self-care acupressure points, stretches, exercises and helpful self-care products, and when to recommend them. See Medical Claims Massage program on how to handle medical claims and bill insurance (60 hours, November 8-12, 15-17, 2010).

Pre-registration required. Visit www.TheRightTouch.com TOP Classes for more details.

Taught by:



Tammy Felix, PhD LMT 5352
NCBTMB (Nationally Certified CE Instructor) 450220-06



Professional Member



5215 NE Elam Young Parkway
Hillsboro, OR 97124

(503) 693-9101